



Until we are all equal



Plan International / Peter Caton

TOP: Lena, 12, enjoys playing at a child-friendly space. BOTTOM: Halima, 12, lives in a displacement camp located in a school.

# Sudan Conflict



In a year marked by devastation for those fleeing conflict in Sudan, your life-saving support reached children and their families.

---

## Project Summary

Sudan is experiencing one of the world's worst humanitarian crises.

**T**welve-year-old Ansam was at home with her family in Khartoum, the capital city of Sudan, when the conflict erupted and schools, markets and playgrounds fell silent. "Fear was my initial response when the news broke that the war had begun," she says. To escape violence between the Sudanese Armed Forces and the paramilitary Rapid Support Forces, Ansam and her family – and millions like them – were forced to flee and say goodbye to their regular lives. (Read her story on page 5.)

In the year since the clashes broke out, your contribution has helped us expand our humanitarian response to support these families, both within Sudan and in neighbouring countries receiving Sudanese refugees such as Chad, Central African Republic, South Sudan, Egypt and Ethiopia. In this region, your support has helped deliver critical assistance to more than 200,000 people.

From child protection and psychosocial support to essential supplies like food, hygiene kits and shelter materials, you are helping reach children, especially girls, who are at the greatest risk of experiencing violence and abuse in a crisis.

Plan International / Peter Caton



Hiteta, 14, on a truck that will transport her and her family to a transit centre in South Sudan

## THE FACTS

**WHAT:** Plan International has been responding to the humanitarian needs of people fleeing conflict in Sudan.

**WHO:** Internally displaced and refugee children and adults

**WHERE:** Sudan, South Sudan, Ethiopia, Egypt, Chad, Central African Republic (CAR)

**WHEN:** Ongoing since April 2023

**WHY:** In April 2023, violent conflict in Sudan escalated to a tipping point. In the year since, 4 million children have been displaced, and 25 million people – over half of them children – need urgent humanitarian assistance and support.

BY THE NUMBERS

# Appeal Highlights



The war in Sudan must end. But the girls and boys affected by the war cannot wait for this – we must support them now.”

– Kristine Anderson, Plan International’s gender-in-emergencies specialist in Chad



Essentials such as soap were distributed to internally displaced people at a school in Sudan’s White Nile State.

## 205,243

people have been reached through Plan’s emergency response initiatives in Sudan. Among them, 17,916 children have received educational assistance.

## 2,801

people in the Central African Republic have taken part in activities to raise awareness of child rights and prevention of child abuse, particularly in times of emergencies, when the risks are higher.

## 11,280

refugees in South Sudan have received essentials such as soap, buckets, mosquito nets, water purification tablets and sleeping mats.

A Plan staff member prepares dignity kits for adolescent girls in a refugee camp in Chad.

## 22,700

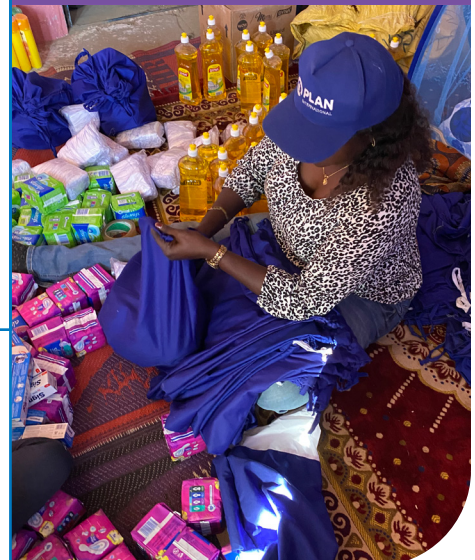
refugees have found safety in shelters that Plan constructed in South Sudan.

## 1,400

adolescent girls and refugees in Egypt and 500 girls in Chad received dignity kits, including sanitary pads, soap, underwear and toothbrushes, among other necessities.

## 349

children in the Central African Republic used our child-friendly spaces to foster safety and restore a sense of normalcy through play and learning.



A STORY OF CHANGE

## Education Isn't an Afterthought

Amid conflict and upheaval, learning spaces are helping children access education.

Children don't belong in conflict-torn communities. They should be learning in schools, playing with friends and living safely in their homes. But the conflict in Sudan is denying millions of children this kind of childhood.

Fourteen-year-old Mai's education came to a complete stop when her family was displaced. Now, living in one of more than 170 schools in Sudan that are sheltering people who have been displaced, Mai says that even playing is difficult. "The space is very small," she says. "We [children] can't play together freely." Everyone sleeps in one room, there is no privacy, and the school is not open for classes and learning.

In the North Darfur region, where Mai lives, and in the South Kordofan region, Plan International is collaborating with local partners to create temporary

learning spaces, distribute learning materials and train teachers to reach and teach children in this challenging context.

"Schools are a protective space for children," says Sara Eltayeb, education program lead for Plan International in Sudan. "The longer schools remain closed [for learning], the higher the risk of children experiencing abuse, child labour and early marriages."

When Plan built a temporary learning space near where Mai lives, it gave her and other children a safe place to play and to resume their education. In the temporary learning space, Mai is studying mathematics, Arabic and English.

"I'm enjoying being back in school and making new friends," she says. "I enjoy chatting about new things, apart from the conflict." Mai has also received food, a kit with school supplies and a mat to sit on in the classroom.



I want to continue studying, to reach my dream of being a great person who can help my people. I believe that with a space for learning, we will shine and do our best to succeed."

– Mai, 14



Angham, 14, lives with her family in a school in Kassala State. She hopes the war will end soon so she can return to her old life, but she doesn't know what the future will bring. She says her hopes of becoming a doctor like her father have been shattered.

Click or scan the QR code to watch Angham share her story.

SPOTLIGHT

## The After-Effects of Trauma

**D**isturbed” and “terrified” are the words Ansam uses to describe her feelings since the war began. When fighting broke out in the market in Khartoum where Ansam’s mother and sister were shopping, she and her father fearfully monitored the news until they returned home.

Three days later, the family was forced to flee their home. “I heard gunshot sounds and saw an airplane over our house shooting at snipers,” Ansam says. They traveled by truck for three grueling days to eastern Sudan, where her grandmother lives.

When we spoke with Ansam, her family was living at a school that was doubling as a centre for internally displaced people. There, she took part in Plan International activities that provide psychosocial support to children. Addressing the psychological effects of trauma is as critical to our humanitarian response as providing shelter, food and supplies.

“I was feeling depressed and angry,” Ansam says. “I developed a stammer due to the fear and shock of the war.” Psychosocial support helps children understand the relationship between how they feel and the difficult things they have experienced. It also helps them find outlets to process and manage these feelings.

“After the sessions, I felt comforted and reassured,” Ansam says. “I hope the war ends and the situation gets back to normal so that I can go back home safely and peacefully.”



Ansam, 12, misses home. She is currently sheltering at a school.



Fatima is living with her nine children in a school in Kassala State. She looks forward to the day she and her children can rejoin her husband back home.

### DID YOU KNOW?

- More than 8.5 million people in Sudan have been forced to flee their homes since April 2023.
- Sudan is the world’s largest child-displacement crisis, with over 4 million children forced from their homes.
- One-third of the population – 18 million people – are facing acute or emergency food insecurity.
- Sudan now has one of the worst education crises in the world, with more than 90% of the country’s 19 million school-age children having no access to formal education.

### Thank you for your support.

None of this work would be possible without your support. Thank you for your commitment to delivering life-saving humanitarian aid to families affected by the conflict in Sudan.



Click or scan the QR code to learn how you can support girls until we are all equal.

## WHAT'S NEW AT PLAN

# Our Shared Dream

**W**e see the world as it is and the world as it could be. No matter how complex the challenges, a better future is possible.

It takes **determination**.

It takes **optimism**.

It takes **vision**.

Our “moon shot” vision is equality for girls everywhere. Improving the lives of girls improves the lives of everyone in the family and the community. That understanding, which we know you share, is at the heart of our fundraising campaign, Until We Are All Equal. When you support this campaign, you’re trusting us to identify the greatest threats to equality, especially for girls, and respond to them as they arise.

Just going to school every day is impossible for many girls, with one in six living in a conflict zone. That’s why, right now, about 120 million girls are missing out on an education. What’s more, many girls – 12 million every year – are forced into early marriage, placing them at a heightened risk of dying from complications of early pregnancy or childbirth.

There are 500 million girls alive on our planet today, each filled with promise and potential and with their whole futures ahead of them. How do you transform the world? Start by investing in girls.



## About Plan International Canada

Plan International Canada is a member of a global organization dedicated to advancing children’s rights and equality for girls. Plan International has been building powerful partnerships with and for children for over 85 years and is now active in more than 80 countries. We stand with children, especially girls, wherever they are oppressed, exploited, left behind or not equally valued. We’re determined optimists, and we will continue to persevere until we are all equal.

**For more information, please contact:**  
philanthropy@plancanada.ca

**Plan International Canada**  
245 Eglinton Ave East, Suite 300  
Toronto, Ontario  
M4P 0B3

416-920-1654  
1-800-387-1418



© 2024 Plan International Canada Inc. The Plan International Canada name, associated trademarks and logos are trademarks of Plan International Canada Inc. The Standards Program Trustmark is a mark of Imagine Canada used under the license by Plan International Canada.

